



## SCOTTISH RITE FOUNDATION OF COLORADO 2010 ANNUAL REPORT

### STATISTICAL SUMMARY

In 2010, the Scottish Rite Foundation (SRF) helped 40 families access the Treasure Chest Program through Rocky Mountain SER Head Start. The table below summarizes the number of children served, age range and number of families on the waiting list. SRF contributed \$25,000 for this program as well as contributing an additional \$2,000 matching grant. Based on the original grant of \$25,000 from the Scottish Rite Foundation, the average program cost per child served was \$390.

Age Range (years)	Children Served	Families Waiting for Availability
0 – 2.5	22	
3 – 5	42	
<b>Total</b>	<b>64</b>	<b>54</b>

### PROGRAM DESCRIPTION

With support from the Scottish Rite Foundation, the Treasure Chest Program provides education and training for children and their families (siblings and parents) in a home based environment. The Treasure Chest Program provides early identification and intervention for children with possible developmental delays. The child’s development is screened and reviewed with parents. Additionally, school readiness is supported through early learning within the home.

The Treasure Chest Tubs are composed of developmentally appropriate materials that help strengthen every child’s growth and development. Each tub contains activities that are based on common themes.

Participation by the parents is an essential component of this program. The Early Literacy Coordinator reviews the materials with parents once a month during their scheduled home visits. The parents then guide their children through these activities.

### ACCOUNTABILITY

Each child receives a developmental screening upon entering preschool. Results of that screening are compared to follow-up screening at the end of the preschool program, typically in May of the following year. Data from the children enrolled in the Treasure

Chest program show consistent growth in language and readiness as measured by the DIAL 3 (Developmental Indicators for the Assessment of Learning).

The results for the 2010/2011 Dial 3 pre assessment for the thirty one children who do not have I.E.P.’s are shown below. The children who do have I.E.P.’s are being assessed by St. Mary’s Life Center



SCOTTISH RITE FOUNDATION OF COLORADO  
 2010 ANNUAL REPORT  
 ROCKY MOUNTAIN SER HEAD START – TREASURE CHEST PROGRAM

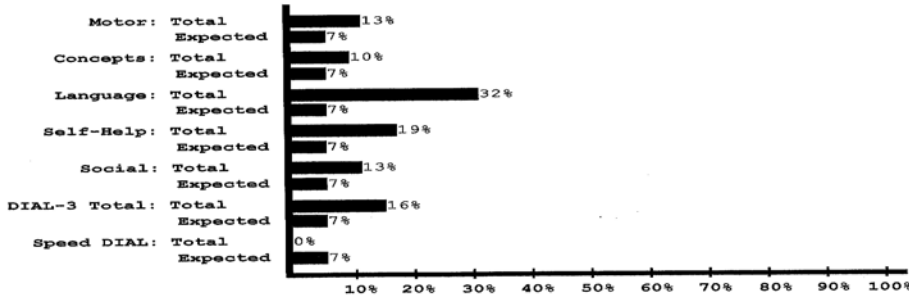
Speech Language Department and the Mesa County School District #51 Child Find. Of the forty two children currently enrolled, eleven already have I.E.P.'s

12/16/2010

**DIAL-3 ASSIST**  
 Developmental Indicators for the Assessment of Learning-Third Edition

**Group Summary**  
 7% Cutoff

	Motor	Concepts	Language	Self Help	Social	DIAL-3 Total	Speed DIAL
Total Number Tested:	31	31	31	31	31	31	0
Total Potential Delay:	4	3	10	6	4	5	0
Total Percent Potential Delay:	13%	10%	32%	19%	13%	16%	0%



COPYRIGHT 1998, AMERICAN GUIDANCE SERVICE, INC., CIRCLE PINES, MN 55014-1796

**LEADERSHIP**

Rose Owens, Disabilities and Mental Health Manager, has been working diligently with School District #51 and St. Mary’s Life Center qualifying more children so they can receive services for speech and language delays.

The Treasure Chest Program encourages our families who have children with speech and language delays to visit with Amy Brophy-Neilsen, M.S., CCC-SLP with St. Mary’s Life Center, to receive additional speech services.

**ACKNOWLEDGEMENT**

The success of the Treasure Chest Program is due to the continued interest, funding and support of the Scottish Rite Foundation.

Respectfully submitted:

Carmen Marsh, BA  
 Treasure Chest Program Coordinator, Grand Junction

